

CS 351

Design Notation

Brooke Chenoweth

University of New Mexico

Spring 2024

Basic Component Notation

- Passive
 - procedure
 - object
- Active
 - task
 - active object
- Organizational
 - package
- External
 - devices and interfaces

Procedure

Object

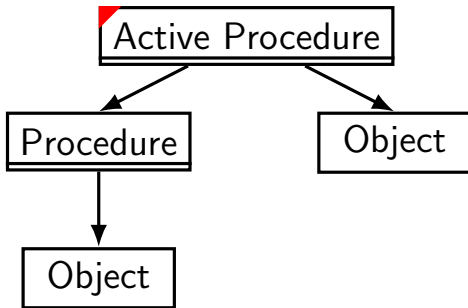
Task

Active Object

Package

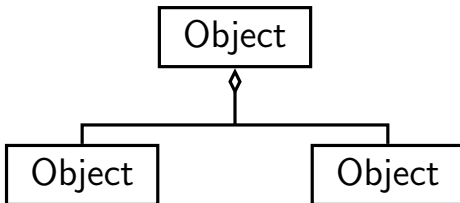


Reference

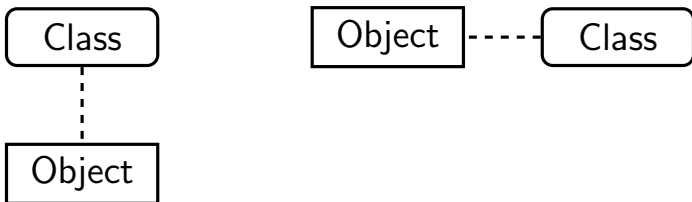


Standard arrow represents reference from one procedure/object to another.

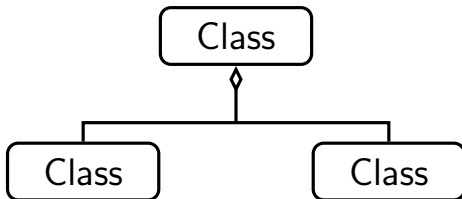
Object Aggregation/Composition



Object Instantiation



Class Composition



Inheritance (extends/implements)

